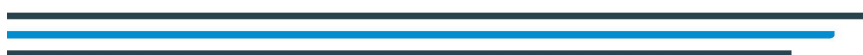


## VA1DA - Arc sensor



### POINT SENSORS

- Easy installation and replacement
- Enables fault location indication
- Surface mounting
- Tube mounting
- Continuous self-supervision



## General

VA 1 DA is a point type arc flash sensor. Arc flash light is transformed to a current signal in the sensor. Characteristics:

- Standard 8000 - 10000 lux visible light sensitivity
- Wide area arc flash detection
- Typically <1 ms detection time
- Standard cable length 6m or 20m (cut to length on site)
- Easy to install (2 wired non polarity sensitive connection)
- Can be switchgear surface mounted, mounted in customer drilled holes in switchgear or on VYX001 Z shape or VYX002 L shape mounting plates available from VAMP or locally fabricated from supplied drawings.

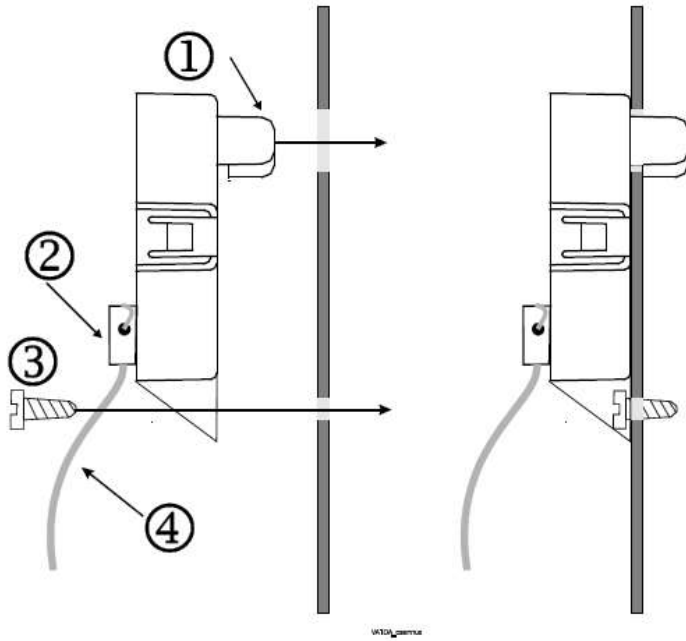
The sensor is used by an arc flash protection device (IED) or system to detect the light coming from the arc flash incident.

The arc sensor VA 1 DA is activated by strong light. The sensor transforms the light information into the current signal, which is used by the IED to indicate arc flash.



## Mounting VA1DA

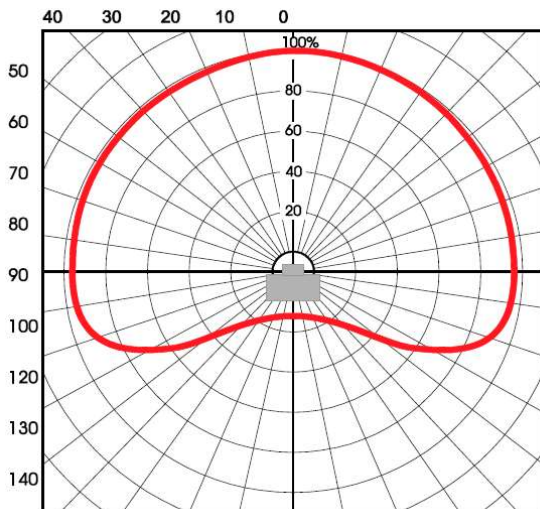
You can install the arc sensor onto the switchgear wall from the outside. Press the active part of the sensor through the 10 mm hole in the wall and fix it using a 4 mm screw.



- ① Active part of the sensor      ② Cable clamp    ③ Fastening screw 4x15 mm
- ④ Cable of sensor

## Sensitivity

The sensor must not be exposed to direct sunlight or other strong light. Do not mount the sensor directly under a light source.



## Technical data

Rated voltage $U_{AUX}$	8, 12 or 15V dc (from the IED)
Current consumption	< 2 – 4mA (in normal mode) < 18 – 29mA (activated)
Housing class (IEC 60529)	IP20
Dimension (W x H x D)	25 x 55 x 14 mm
Material	Plastic
Weight (with 6 m cable)	300 g
Cable length	6 or 20 m
Environment	Pollution Degree 2.
Operation temperature	-25 to +70 °C
Light spectrum sensitivity area	400 – 1100 nm

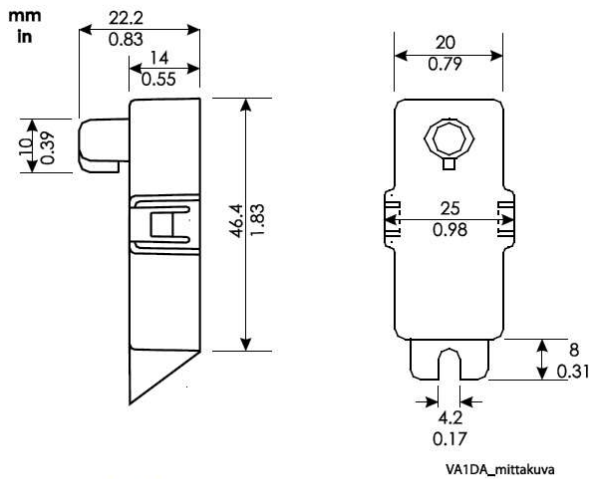


Figure 1. VA 1 DA layout

## Order Information

Order code	Description	Note
VA1DA-6	Arc sensor with 6 meter cable	
VA1DA-20	Arc sensor with 20 meter cable	

